

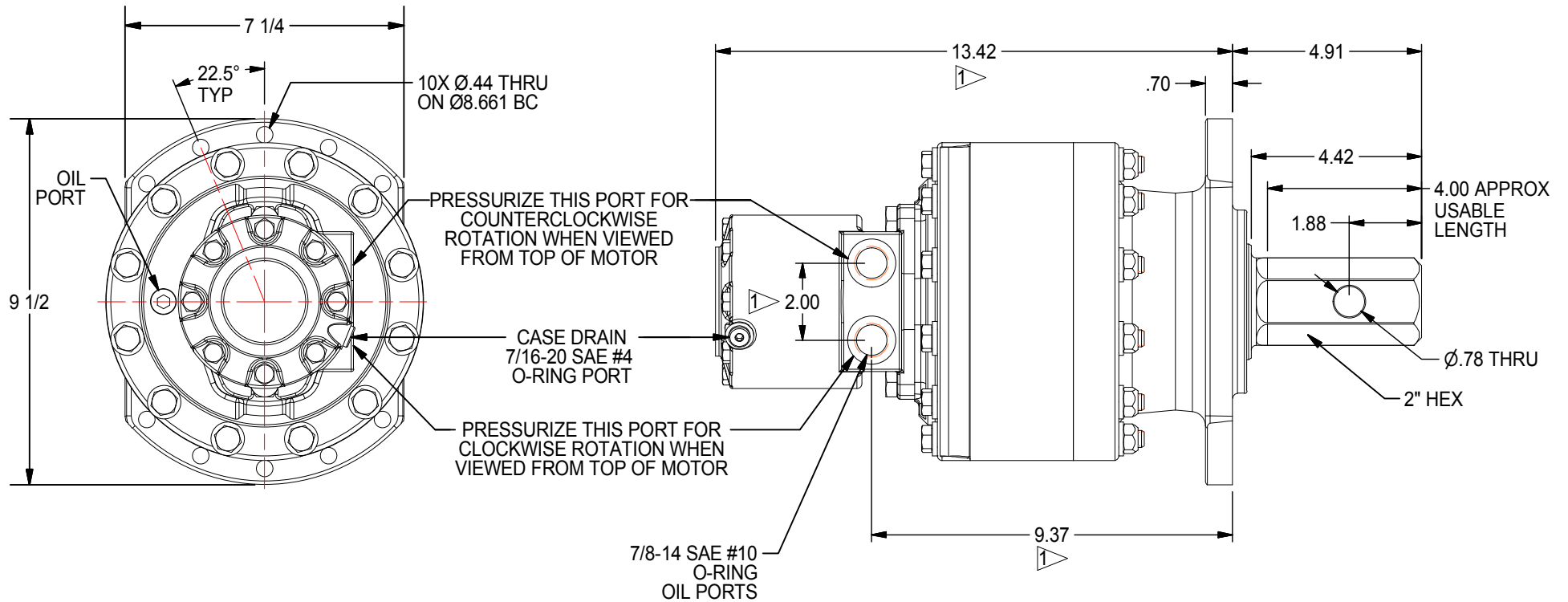


# 50 SERIES LIGHTWEIGHT DRIVE HEAD

5,000 ft-lb (6,780 N-m) to 7,000 ft-lb (9,491 N-m) Maximum  
Typical Applications: Utility and Construction Industries

(913) 782-1238 (Tel)  
(913) 782-4206 (Fax)  
Sales@Eskridgeinc.com  
www.Eskridgeinc.com  
FORM: PS D50LW-A

Page 1 of 3



## NOTES: ▷

1. SUBJECT TO CHANGE WITH DIFFERENT MOTORS.
2. VALUES ARE SHOWN IN INCHES.



# 50 SERIES LIGHTWEIGHT DRIVE HEAD

5,000 ft-lb (6,780 N-m) to 7,000 ft-lb (9,491 N-m) Maximum  
 Typical Applications: Utility and Construction Industries

(913) 782-1238 (Tel)  
 (913) 782-4206 (Fax)  
[Sales@Eskridgeinc.com](mailto:Sales@Eskridgeinc.com)  
[www.Eskridgeinc.com](http://www.Eskridgeinc.com)  
 FORM: PS D50LW-A

## Performance Ratings

Maximum Intermittent Output Torque: 5,000 ft-lb (6,780 N-m) to 7,000 ft-lb (9,491 N-m)  
 Shaft Pressure Load: 15,000 lb (6,800 kg)  
 Shaft Pullout Load: 10,000 lb (4,540 kg)  
 \*Shaft Side loading Not Recommended  
 Maximum Operating Ambient Temperature: 110°F (43°C)  
 Minimum Operating Ambient Temperature: -20°F (-28°C)

*Consult your Eskridge representative to determine ratings for your specific application or configuration*

## Oil Capacities

5025	5425
2.25 PINTS	2.00 PINTS
1.06 LITERS	.95 LITERS

ALL UNITS WITH MOTORS SHIPPED WITH OIL  
 Use EP or API GL-5 Designated Lubricants

## Motor Mount Dimensions

PILOT DIMENSIONS	BOLT CIRCLE
SAE 'A' Ø3.251/3.255	2X 1/2-13 UNC-2B ∇5/8 ON Ø4.188 BC

## Motor Specifications:

Single Speed Hydraulic Vane Motors  
 Maximum System Pressure: 3250 psi (225 bar)  
 Maximum Differential Pressure: 2500 psi (170 bar) Continuous  
 3000 psi (210 bar) Intermittent

## Approximate Unit Weight

With Motor: 80-85 lbs (36-39 kg)

### Ordering Information

Example Part Number: 5025-13F134

MODEL	OUTPUT SHAFT	MOUNT	MOTOR SUPPLIER	MOTOR PART NUMBER
<input type="text" value="5025"/>	<input type="text" value="1"/>	<input type="text" value="3"/>	<input type="text" value="F"/>	<input type="text" value="134"/>
5025- 25:1 REDUCTION	1- 2" HEX	3- FLANGE MOUNT	F- FACTORY U- USER	134- 7.1 CU. IN. 135- 10.6 CU. IN.
5425- 25:1 REDUCTION				



# 50 SERIES LIGHTWEIGHT DRIVE HEAD

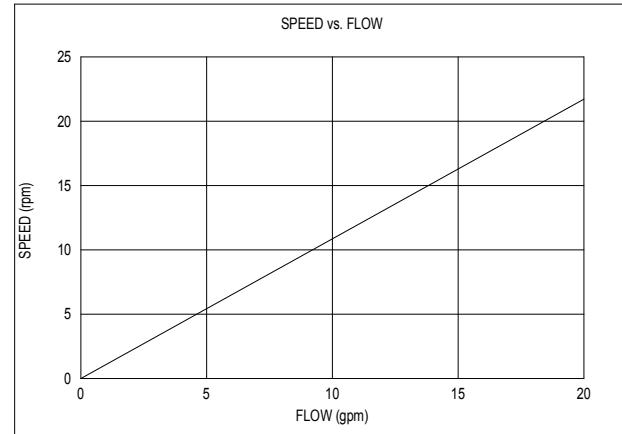
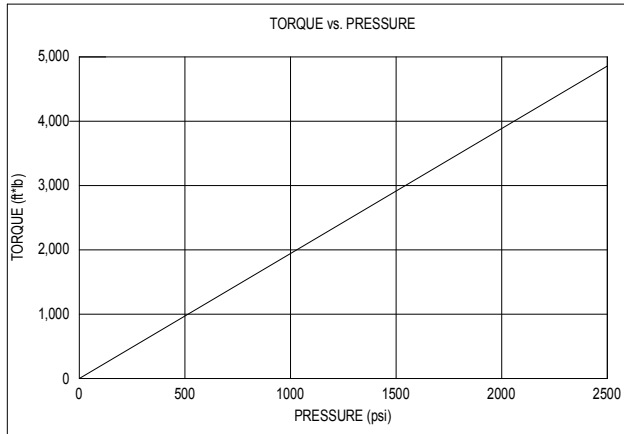
5,000 ft-lb (6,780 N-m) to 7,000 ft-lb (9,491 N-m) Maximum  
Typical Applications: Utility and Construction Industries

(913) 782-1238 (Tel)  
(913) 782-4206 (Fax)  
[Sales@Eskridgeinc.com](mailto:Sales@Eskridgeinc.com)  
[www.Eskridgeinc.com](http://www.Eskridgeinc.com)  
FORM: PS D50LW-A

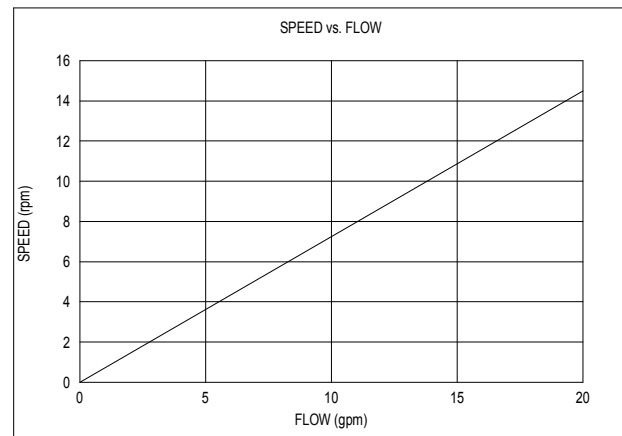
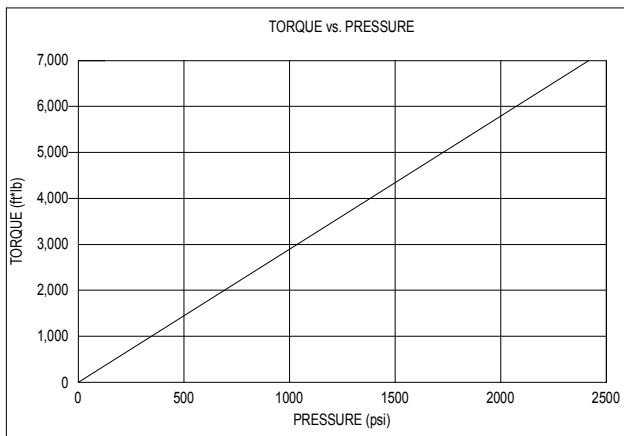
Page 3 of 3

## Torque and Speed Charts:

5025-13F134



5425-13F135



- \* Starting torques are approximately 25% less than running torque.
- \* System back pressure will reduce running torque proportionally.
- \* System back pressure should be limited to 100psi (6.9 bar).
- \* Consult Eskridge Representative for Torque and Speed Charts for your specific application.