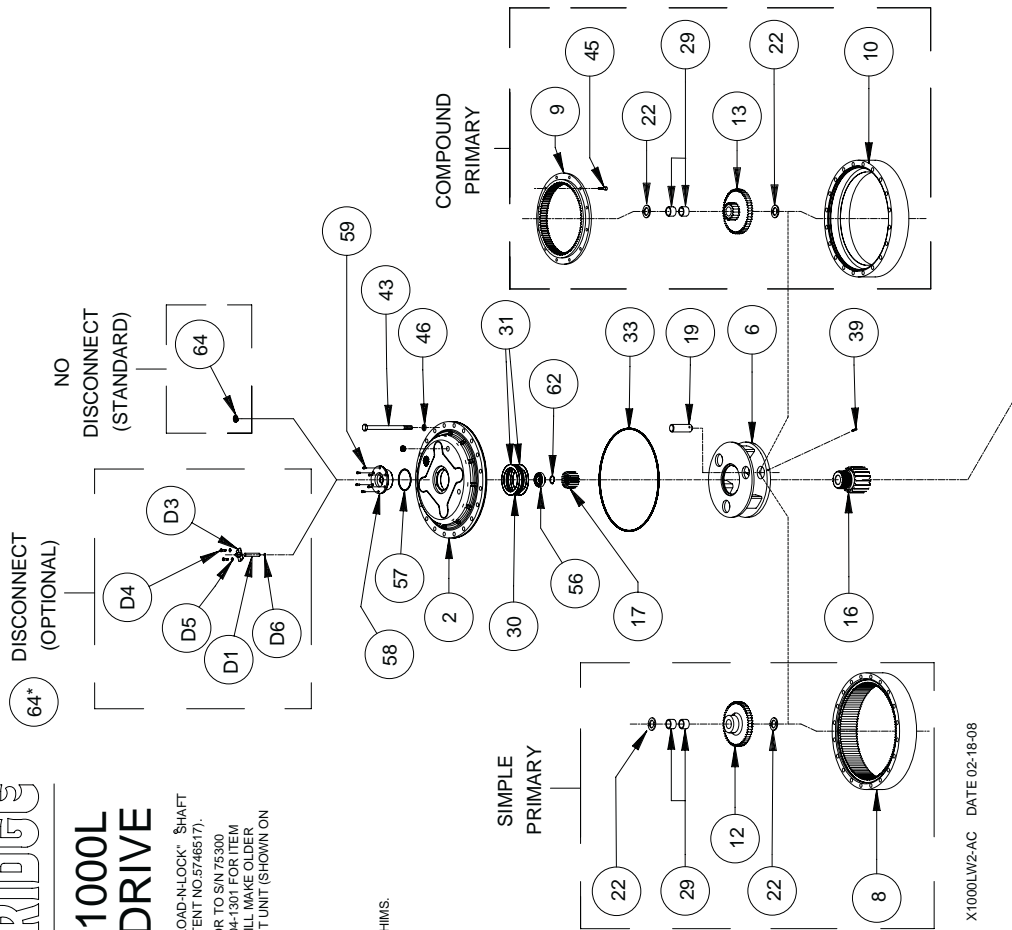




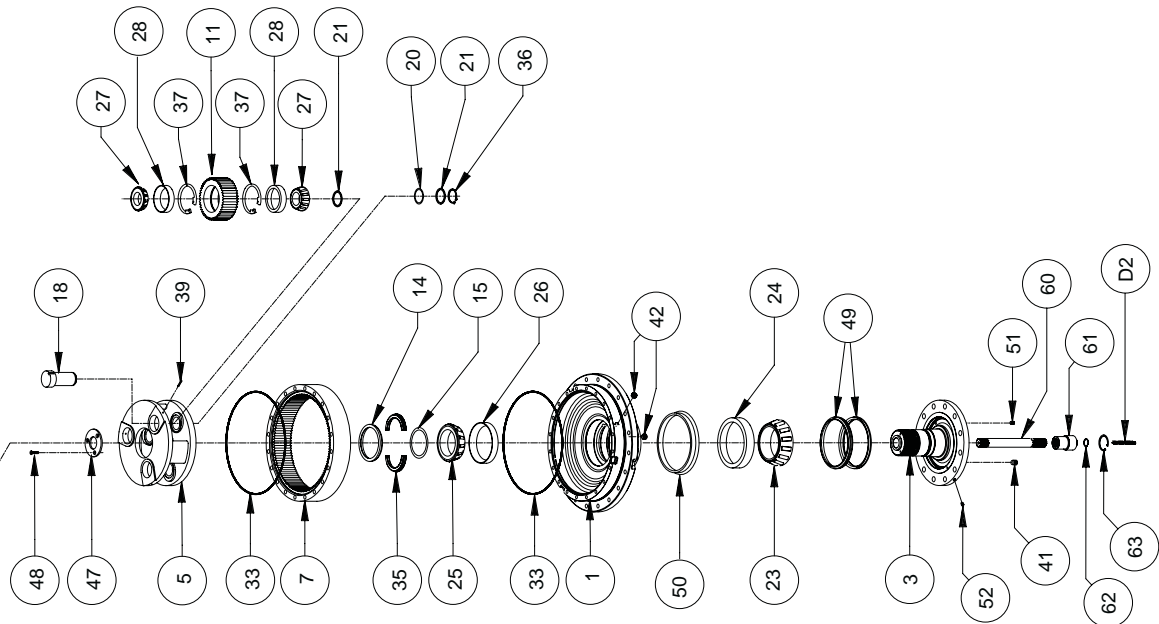
MODEL 1000L WHEEL DRIVE

EQUIPPED WITH PATENTED "LOAD-N-LOCK"™ SHAFT RETENTION SYSTEM (U.S. PATENT NO. 5746517).
 *UNITS MANUFACTURED PRIOR TO SN 752000 UTILIZE (OBSOLETE) P/N 60-004-1301. FOR ITEM 22, USE OF P/N 60-004-1881 WILL MAKE OLDER UNITS IDENTICAL TO CURRENT UNIT (SHOWN ON THIS DRAWING).
 EFFECTIVE FROM SN 70500 08-01-06 TO (CURRENT)

NOTES:
 -J- BEARING PRELOAD DETERMINES QUANTITY OF SHIMS.
 SEAL KIT (P/N 60-016-2101) INCLUDES:
 3 EA. ITEM (33) O-RINGS,
 1 EA. ITEM (49) SEAL, AND
 1 EA. ITEM (50) SEAL BOOT.



X1000LW2-AC DATE 02-18-08



		MODEL 1000L WHEEL DRIVE		RATIOS →		SIMPLE PLANETARY		COMPOUND PLANETARY
								
ITEM	QTY.	DESCRIPTION		PART NUMBER	PART NUMBER	PART NUMBER		
1	1	CODE F - FLANGELESS		60-004-3034		60-004-3034		
		CODE A - FLANGED		60-004-3044		60-004-3044		
		CODE C - CUSTOM						
2	1	COVER		60-004-1444		60-004-1444		
3	1	CODE W1C - 17" DIA ; 12X 1 1/8 - 12 UNF - 2B		60-004-4172L		60-004-4172L		
		CODE W1D - 17" DIA.; 12X 1 1/8 - 12 UNF - 2B		60-004-4072L		60-004-4072L		
		CODE WC1 - CUSTOM						
5	1	CARRIER - SECONDARY		60-004-1044		60-004-1044		
6	1	CARRIER - PRIMARY		60-004-1372	60-004-1722	60-004-1722		
7	1	RING GEAR - SECONDARY		60-004-1243		60-004-1243		
8	-	RING GEAR - SIMPLE PRIMARY		60-004-1193		-		
9	1	RING GEAR - COMPOUND PRIMARY		-	-	60-004-1213		
10	1	RING SPACER - PRIMARY		-	-	60-004-1253		
11	3	PLANET GEAR - SECONDARY		60-004-1232		60-004-1232		
12	-	PLANET GEAR - PRIMARY		60-004-1132	60-004-1152	-		
13	3	CLUSTER GEAR		-	-	60-004-1162		
14	1	LOCK RING		60-004-1472		60-004-1472		
15	-J-	SHIM(S) - SHAFT		60-004-1311		60-004-1311		
16	1	SECONDARY SUN GEAR		60-004-1362		60-004-1362		
17	1	PRIMARY SUN GEAR (13T; 8/16 SPLINE) HOLLOW SPIND.		60-004-1382	60-004-1812	60-004-1812		
18	3	PLANET SHAFT-SECONDARY		60-004-1262		60-004-1262		
19	3	PLANET SHAFT-PRIMARY		60-004-1272		60-004-1272		
20	-J-	SHIM(S) - SECONDARY PLANET		60-004-1321		60-004-1321		
21	6	WASHER - SECONDARY PLANET		60-004-1291		60-004-1291		
22	6	WASHER - PRIMARY PLANET		60-004-1301		60-004-1301		
23	1	BEARING CONE - SHAFT OUTER		01-102-0190		01-102-0190		
24	1	BEARING CUP - SHAFT OUTER		01-103-0190		01-103-0190		
25	1	BEARING CONE - SHAFT INNER		01-102-0230		01-102-0230		
26	1	BEARING CUP - SHAFT INNER		01-103-0230		01-103-0230		
27	6	CONE - SEC.PLANET		01-102-0210		01-102-0210		
28	6	CUP - SEC.PLANET		01-103-0210		01-103-0210		
29	6	BRG-PRIMARY PLANET		01-105-0510		01-105-0510		
30	1	BRG-PRI. CARR. THRUST		01-112-0340		01-112-0340		
31	2	RACE-PRI. CARR. THRUST		01-112-0350		01-112-0350		
33	3	O-RING - RING GEAR		01-402-0660		01-402-0660		
35	1	SPLIT RING		60-004-1482		60-004-1482		
36	3	RETAINING RING - SEC. PIN		01-160-0490		01-160-0490		
37	6	RETAINING RING-SEC. PLNT.		01-160-0500		01-160-0500		
39	6	ROLL PIN - PRI. 1/4 X 1 3/8		01-153-0150		01-153-0150		
41	1	PIPE PLUG 1/4 NPT		01-207-0020		01-207-0020		
42	6	PIPE PLUG 3/4 NPT MAGNETIC		01-207-0100		01-207-0100		
43	20	H.H.C.S 3/4-10 X 10.5 GRD 8		01-150-1580		01-150-1580		
45	12	S.H.C.S 1/2-13 X 1.5 GRD 8		-		01-150-0570		
46	20	LOCKWASHER - 3/4		01-166-0360		01-166-0360		
47	1	RING - SEC CARRIER RETAINER		60-004-1352		60-004-1352		
48	3	FLAT HD. SOC. C.S. 3/8-24 X 1 GR8		01-150-1590		01-150-1590		
49	1	SEAL - METAL FACE		01-406-0010		01-406-0010		
50	1	SEAL - RUBBER FACE		01-406-0020		01-406-0020		
51	1	PIPE PLUG (1/8 NPT-HOLLOW HEX)		01-207-0030		01-207-0030		
52	1	GREASE FITTING-STRAIGHT, 1/8 NPT		01-215-0010		01-215-0010		
53	(1)	CODE 3 : 14T, 12/24 D.P., LONG SHAFT (OPTIONAL)		98-005-1141		98-005-1141		
		CODE 4 : 14T, 12/24 D.P. (OPTIONAL)		60-004-1943		60-004-1943		
		CODE 7 : 17T, 12/24 D.P. (OPTIONAL)		60-004-1944		60-004-1944		
54	(1)	CODE V - AIR VENT; (#301370) ALEMITE, 1/8" NPT (OPT.)		01-216-0030		01-216-0030		
55	(1)	ADAPTER; 3/4" NPT-M, 1/8" NPT-F (OPTIONAL)		01-201-0530		01-201-0530		
56	1	BALL BEARING (7207 WN)		01-100-0320		01-100-0320		
57	1	O - RING		01-402-0220		01-402-0220		
58	1	THRUST HUB		60-004-1822		60-004-1822		
59	6	SHCS (1/4-20 X 1/2 GR8)		01-150-0560		01-150-0560		
60	1	INPUT SHAFT - 13T HOLLOW SPINDLE		60-004-1392		60-004-1392		
61	1	CODE 4, 7 & 8 : 16T, 8/16 D.P. INPUT COUPLING		60-004-1422		60-004-1422		
		CODE 3 & 9 : 13T, 8/16 D.P. INPUT COUPLING		60-004-1692		60-004-1692		
62	2	RETAINING RING		01-160-0580		01-160-0580		
63	1	RETAINING RING		01-160-0060		01-160-0060		
64	1	PLUG SAE #14 (MODELS W/OUT DISCONNECT OPTION)		01-208-0080		01-208-0080		
		DISCONNECT OPTION KIT (INCLUDES ITEMS D1-D6)		60-005-2143		60-005-2143		
D1	1	DOWEL PIN (5/8 x 3-1/2)		01-152-0130		01-152-0130		
D2	1	SPRING 6.0 x .75 x .54 x 23 lb/in		01-261-0550		01-261-0550		
D3	1	DISCONNECT PLATE		600-004-1832		600-004-1832		
D4	2	HHCS; 5/16-18 x 1 GR5		01-150-1790		01-150-1790		
D5	2	LOCKWASHER (5/16)		01-166-0110		01-166-0110		
D6	1	O-RING		01-402-0900		01-402-0900		