



# 600 Wheel Drive

Typical Applications: Industrial, Marine or Mobile Equipment

(913) 782-1238 (Tel)  
 (913) 782-4206 (Fax)  
[Sales@EskridgeInc.com](mailto:Sales@EskridgeInc.com)  
[www.EskridgeInc.com](http://www.EskridgeInc.com)  
 FORM: PS600W\_AE  
 Page 1 of 4

## Performance Ratings

Maximum Intermittent Output Torque ..... 600,000 in-lb (67,791 N-m)  
 Continuous Output Torque ..... 300,000 in-lb (33,895 N-m)  
 Peak Torque Rating..... Consult Eskridge  
 Maximum Input Speed (No Load)..... 4,000 RPM

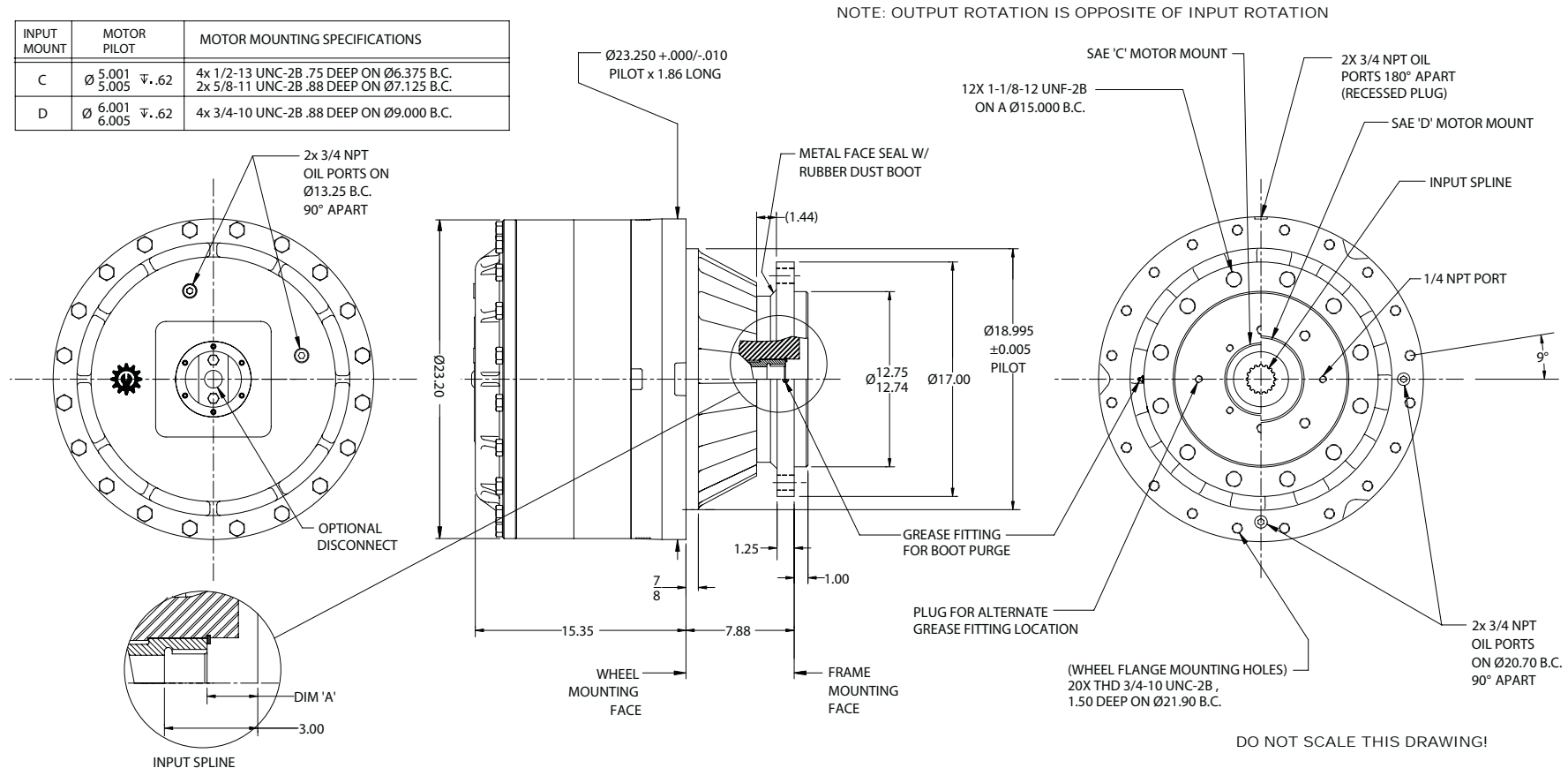
Consult your Eskridge representative to determine ratings for your specific application or configuration.

## General Dimensions for Flangeless (ordering option 'F') Wheel Flange

Other options may be available. See ordering information on last page or contact your Eskridge representative for more details.

Values are shown as "inches (millimeters)."

INPUT MOUNT	MOTOR PILOT	MOTOR MOUNTING SPECIFICATIONS
C	Ø 5.001 5.005 Ψ .62	4x 1/2-13 UNC-2B .75 DEEP ON Ø6.375 B.C. 2x 5/8-11 UNC-2B .88 DEEP ON Ø7.125 B.C.
D	Ø 6.001 6.005 Ψ .62	4x 3/4-10 UNC-2B .88 DEEP ON Ø9.000 B.C.





# 600 Wheel Drive

Typical Applications: Industrial, Marine or Mobile Equipment

(913) 782-1238 (Tel)  
 (913) 782-4206 (Fax)  
[Sales@EskridgeInc.com](mailto:Sales@EskridgeInc.com)  
[www.EskridgeInc.com](http://www.EskridgeInc.com)  
 FORM: PS600W\_AE  
 Page 2 of 4

## Performance Ratings

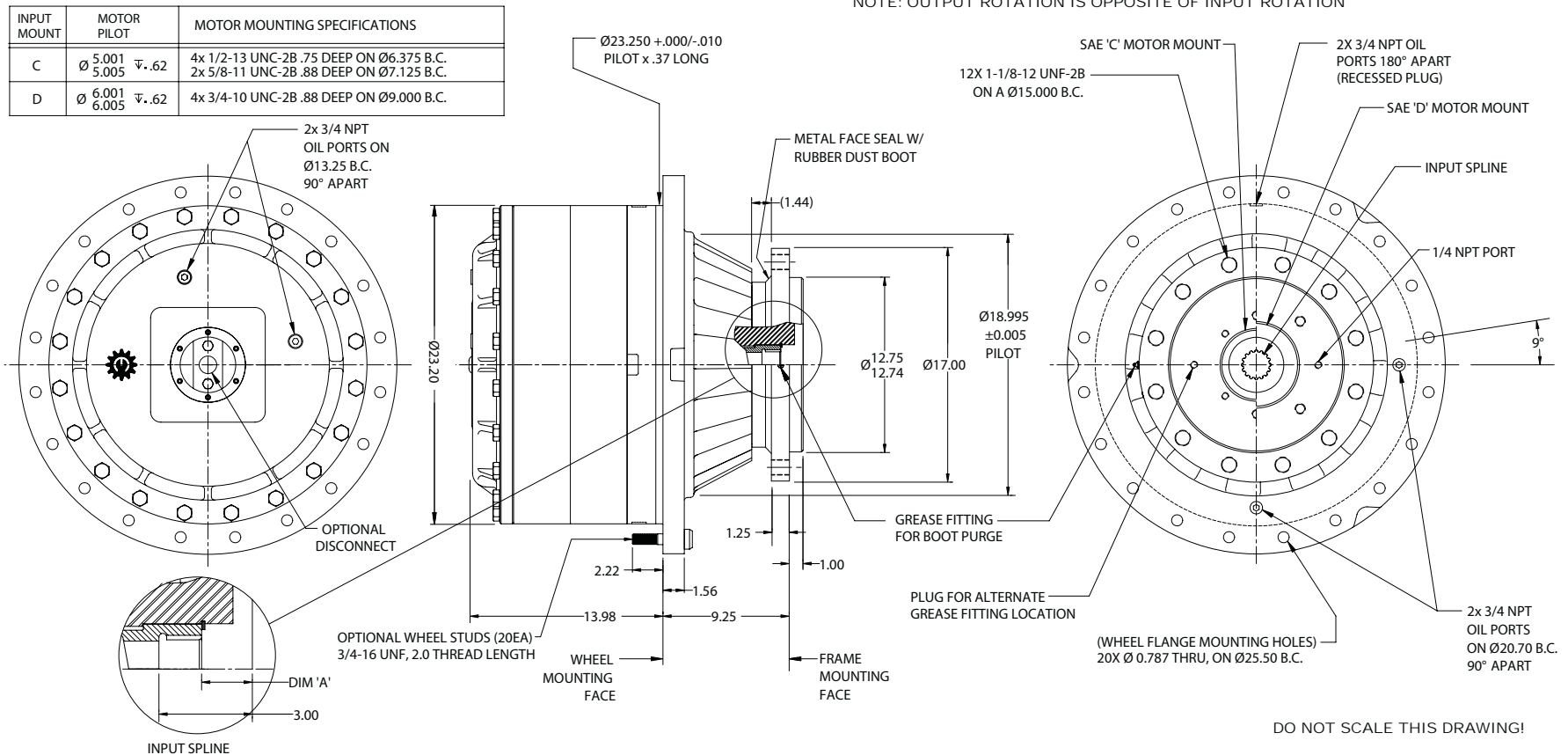
Maximum Intermittent Output Torque ..... 600,000 in-lb (67,791 N-m)  
 Continuous Output Torque ..... 300,000 in-lb (33,895 N-m)  
 Peak Torque Rating..... Consult Eskridge  
 Maximum Input Speed (No Load)..... 4,000 RPM

Consult your Eskridge representative to determine ratings for your specific application or configuration.

## General Dimensions for Flanged (ordering option 'A') Wheel Flange

Other options may be available. See ordering information on last page or contact your Eskridge representative for more details.

Values are shown as "inches (millimeters)."





# 600 Wheel Drive

Typical Applications: Industrial, Marine or Mobile Equipment

(913) 782-1238 (Tel)  
 (913) 782-4206 (Fax)  
[Sales@EskridgeInc.com](mailto:Sales@EskridgeInc.com)  
[www.EskridgeInc.com](http://www.EskridgeInc.com)  
 FORM: PS600W\_AE  
 Page 3 of 4

## Oil Capacities

Position	Quantity
Vertical	9.50 gallons / 36 liters
Horiz.	5.00 gallons / 19 liters

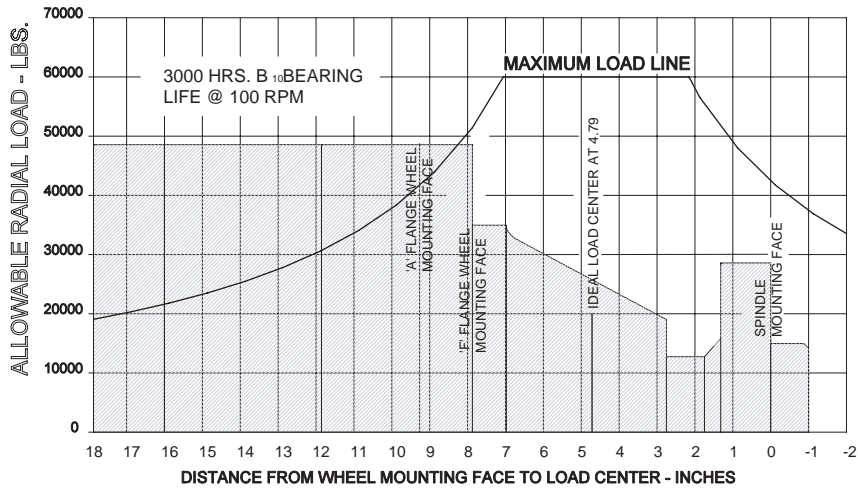
All units are shipped dry (without oil).

## Approximate Unit Weight

1,350 - 1,425 lbs / 614 - 648 kg

## Bearing Curve

### SHAFT BEARING CURVE



To adjust for loads and speeds other than those shown on above curve, use this formula:

$$\text{Adjusted Life (hours)} = 3000 \left( \frac{100\text{rpm}}{\text{Speed(Adjusted)}} \right) \times \left( \frac{\text{Load (Curve)}}{\text{Load (Adjusted)}} \right)^{10/3}$$

## Dimension "A" Specifications

Input Mounting	Input Spline				
	14T 12/24 DP (code 3)	14T 12/24 DP (code 4)	17T 12/24 DP	16T 8/16 DP	13T 8/16 DP
A	.67 (17)	1.36 (34.5)	1.63 (41.4)	1.63 (41.4)	1.63 (41.4)
F	.67 (17)	1.36 (34.5)	1.63 (41.4)	1.63 (41.4)	1.63 (41.4)
C	Consult Eskridge				



# 600 Wheel Drive

Typical Applications: Industrial, Marine or Mobile Equipment

(913) 782-1238 (Tel)  
 (913) 782-4206 (Fax)  
[Sales@EskridgeInc.com](mailto:Sales@EskridgeInc.com)  
[www.EskridgeInc.com](http://www.EskridgeInc.com)  
 FORM: PS600W\_AE  
 Page 4 of 4

## Ordering Information

Example Part Number: 600LAW1C4-38-Z

