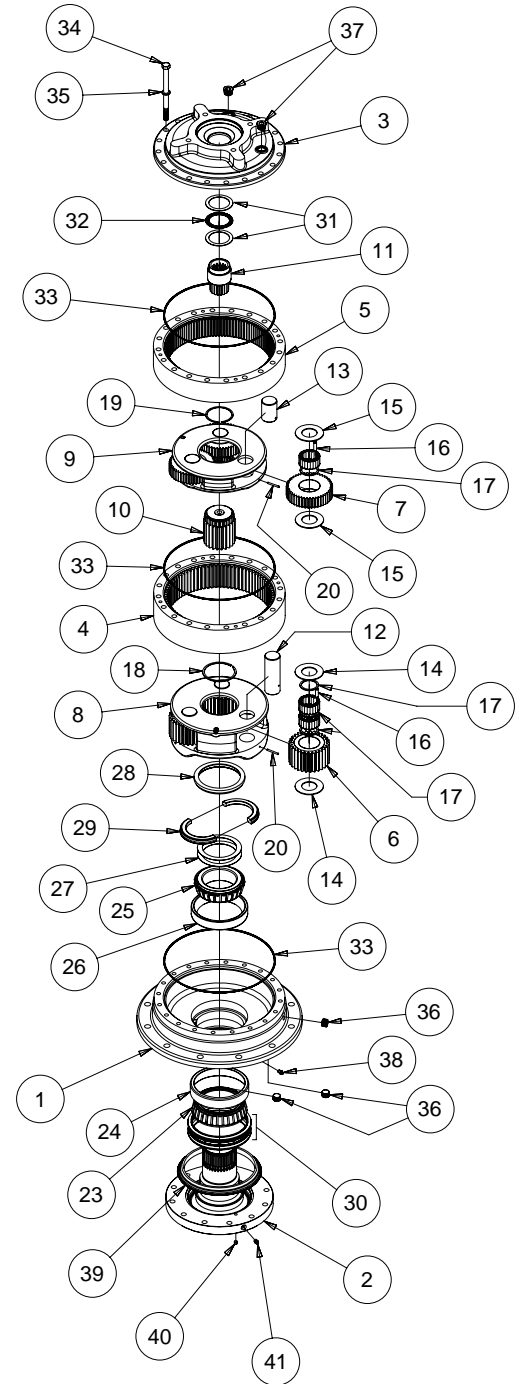


440 Double Stage Exploded View Drawing

ITEM	QTY	DESCRIPTION	19:1		28:1		36:1		47:1	
			3.95	4.77	5.87	4.77	7.59	4.77	7.59	6.19
1	1	Base A round **	42-004-3062	42-004-3062	42-004-3062	42-004-3062	42-004-3062	42-004-3062	42-004-3062	42-004-3062
		Base F flangeless **	42-004-3072	42-004-3072	42-004-3072	42-004-3072	42-004-3072	42-004-3072	42-004-3072	42-004-3072
2	1	Shaft output S1	42-004-4032	42-004-4032	42-004-4032	42-004-4032	42-004-4032	42-004-4032	42-004-4032	42-004-4032
3	1	SAE 'C' 2 Bolt and 4 Bolt	42-004-2012	42-004-2012	42-004-2012	42-004-2012	42-004-2012	42-004-2012	42-004-2012	42-004-2012
		SAE 'D' 4 Bolt	42-004-2022	42-004-2022	42-004-2022	42-004-2022	42-004-2022	42-004-2022	42-004-2022	42-004-2022
		SAE 'E' 4 Bolt	42-004-2032	42-004-2032	42-004-2032	42-004-2032	42-004-2032	42-004-2032	42-004-2032	42-004-2032
4	1	Ring gear secondary	42-004-1032	42-004-1032	42-004-1032	42-004-1032	42-004-1032	42-004-1032	42-004-1032	
5	1	Ring gear primary	42-004-1042	42-004-1042	42-004-1042	42-004-1042	42-004-1042	42-004-1042	42-004-1042	
6	3	Planet gear - sec	42-004-1092	42-004-1092	42-004-1092	42-004-1242	42-004-1242	42-004-1242	42-004-1242	
7	3	Planet gear - pri	42-004-1102	42-004-1112	42-004-1272	42-004-1272	42-004-1272	42-004-1272	42-004-1272	
8	1	Carrier - secondary	42-004-1402	42-004-1402	42-004-1402	42-004-1392	42-004-1392	42-004-1392	42-004-1392	
9	1	Carrier - primary	42-004-1062	42-004-1072	42-004-1282	42-004-1282	42-004-1282	42-004-1282	42-004-1282	
10	1	Sun gear secondary	42-004-1132	42-004-1132	42-004-1132	42-004-1252	42-004-1252	42-004-1252	42-004-1252	
11	1	Input gear 13 tooth, 8/16	42-004-1152	42-004-1162	42-004-1172	42-004-1172	42-004-1172	42-004-1172	42-004-1172	42-004-1172
	1	For 14 tooth, 12/24, use adapter	98-005-1141	98-005-1141	98-005-1141	98-005-1141	98-005-1141	98-005-1141	98-005-1141	98-005-1141
12	3	Planet shaft - sec	42-004-1332	42-004-1332	42-004-1332	42-004-1332	42-004-1332	42-004-1332	42-004-1332	
13	3	Planet shaft - pri	42-004-1342	42-004-1342	42-004-1342	42-004-1342	42-004-1342	42-004-1342	42-004-1342	
14	6	Planet thrust washer-sec	42-004-1362	42-004-1362	42-004-1362	42-004-1362	42-004-1362	42-004-1362	42-004-1362	
15	6	Planet thrust washer - pri	42-004-1362	42-004-1362	42-004-1362	42-004-1362	42-004-1362	42-004-1362	42-004-1362	
16	180	Roller sec-2 x 20, pri-1 x 20	01-106-0040	01-106-0040	01-106-0040	01-106-0040	01-106-0040	01-106-0040	01-106-0040	
17	12	Roller spacer washer	42-004-1352	42-004-1352	42-004-1352	42-004-1352	42-004-1352	42-004-1352	42-004-1352	
18	1	Retaining ring - secondary	01-160-0680	01-160-0680	01-160-0680	01-160-0680	01-160-0680	01-160-0680	01-160-0680	
19	1	Retaining ring - sun gear	01-160-0690	01-160-0690	01-160-0690	01-160-0690	01-160-0690	01-160-0690	01-160-0690	
20	6	Roll pin	01-153-0220	01-153-0220	01-153-0220	01-153-0220	01-153-0220	01-153-0220	01-153-0220	
23	1	Bearing outer cone (67391)	01-102-0300	01-102-0300	01-102-0300	01-102-0300	01-102-0300	01-102-0300	01-102-0300	
24	1	Bearing outer cup (67322)	01-103-0290	01-103-0290	01-103-0290	01-103-0290	01-103-0290	01-103-0290	01-103-0290	
25	1	Bearing inner cone (71450)	01-102-0280	01-102-0280	01-102-0280	01-102-0280	01-102-0280	01-102-0280	01-102-0280	
26	1	Bearing inner cup (71750)	01-103-0280	01-103-0280	01-103-0280	01-103-0280	01-103-0280	01-103-0280	01-103-0280	
27	*	Shim	42-004-1202	42-004-1202	42-004-1202	42-004-1202	42-004-1202	42-004-1202	42-004-1202	
28	1	Lock ring	42-004-1212	42-004-1212	42-004-1212	42-004-1212	42-004-1212	42-004-1212	42-004-1212	
29	1	Split ring	42-004-1222	42-004-1222	42-004-1222	42-004-1222	42-004-1222	42-004-1222	42-004-1222	
30	1	Face seal (CAT 9G-5315)	01-406-0080	01-406-0080	01-406-0080	01-406-0080	01-406-0080	01-406-0080	01-406-0080	
31	2	Thrust washer	01-112-0400	01-112-0400	01-112-0400	01-112-0400	01-112-0400	01-112-0400	01-112-0400	
32	1	Thrust bearing	01-112-0410	01-112-0410	01-112-0410	01-112-0410	01-112-0410	01-112-0410	01-112-0410	
33	3	O-ring	01-402-0840	01-402-0840	01-402-0840	01-402-0840	01-402-0840	01-402-0840	01-402-0840	
34	20	Hex head capscrew 5/8-11 X 8.5	01-150-1840	01-150-1840	01-150-1840	01-150-1840	01-150-1840	01-150-1840	01-150-1840	
35	20	Lockwasher	01-166-0040	01-166-0040	01-166-0040	01-166-0040	01-166-0040	01-166-0040	01-166-0040	
36	3	Plug - 3/4 NPT magnetic	01-207-0100	01-207-0100	01-207-0100	01-207-0100	01-207-0100	01-207-0100	01-207-0100	
37	2	Plug - sae -12 port	01-208-0030	01-208-0030	01-208-0030	01-208-0030	01-208-0030	01-208-0030	01-208-0030	
38	***	Grease Fitting - 1/8 NPT	01-215-0010	01-215-0010	01-215-0010	01-215-0010	01-215-0010	01-215-0010	01-215-0010	
39	1	Seal dust boot	01-406-0090	01-406-0090	01-406-0090	01-406-0090	01-406-0090	01-406-0090	01-406-0090	
40	1	Plug - 1/8 NPT	01-207-0030	01-207-0030	01-207-0030	01-207-0030	01-207-0030	01-207-0030	01-207-0030	
41	1	Grease Fitting - 1/8 NPT	01-215-0010	01-215-0010	01-215-0010	01-215-0010	01-215-0010	01-215-0010	01-215-0010	



* QUANTITY OF SHIMS DETERMINED BY BEARING PRE-LOAD REQUIRED

X440LS2-aa DATE:04-05-06

** FOR Z OPTION, ADD 'Z' TO BASE PART NUMBER (IE: 42-004-3062Z)