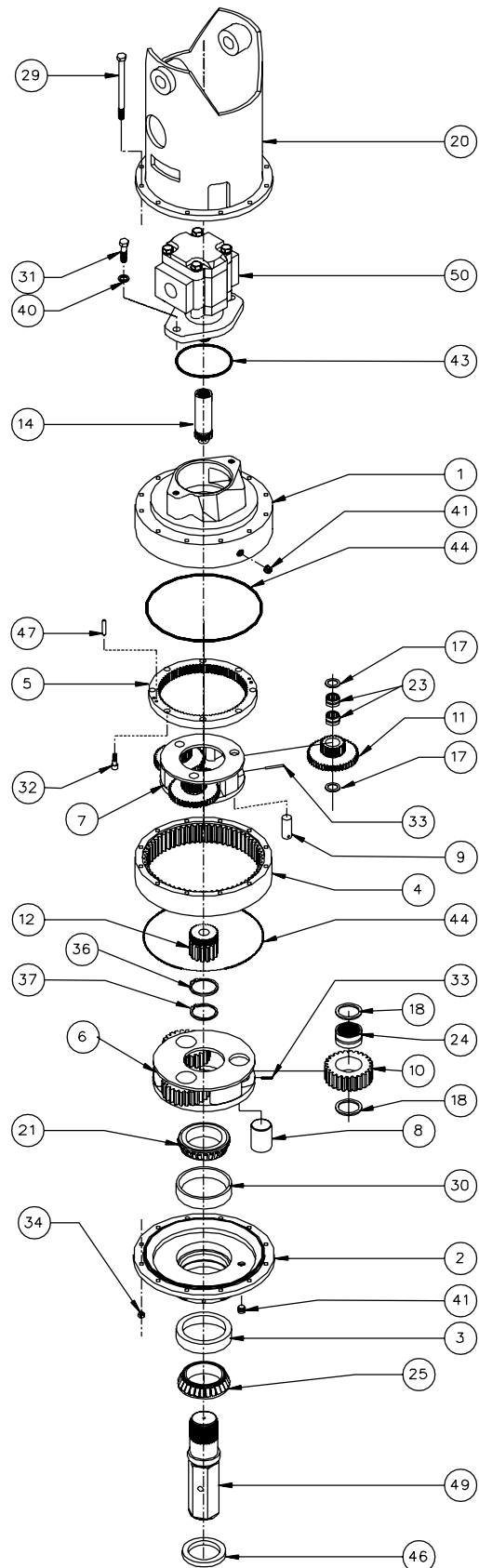


ITEM	QTY	77BA	77BC	77BD	DESCRIPTION
1.	1	72-004-3154	→	→	TOP CASE
2.	1	71-004-2144	→	→	BEARING CARRIER
3.	1	01-103-0080	→	→	BRG CUP - LOWER SHAFT CUP
4.	1	71-004-0042	→	→	RING GEAR, SEC.
5.	1	71-004-0142	→	→	RING GEAR, PRI.
6.	1	71-004-0073	→	→	PLANET CARRIER, SEC.
7.	1	71-004-0113	71-004-0433	71-004-0433	PLANET CARRIER, PRI.
8.	3	71-004-0081	→	→	PLANET PIN, SEC.
9.	3	71-004-0121	→	→	PLANET PIN, PRI.
10.	3	71-004-0092	→	→	PLANET GEAR, SEC.
11.	3	71-004-0132	71-004-0412	72-004-0182	CLUSTER GEAR, PRI.
12.	1	71-004-0102	→	→	SUN GEAR, SEC.
14.	1	72-004-0132	72-004-0122	72-004-0082	INPUT GEAR
17.	6	71-004-0861	→	→	WASHER, PRI.
18.	6	71-004-0871	→	→	WASHER, SEC.
20.	1	PER CUSTOMER SPEC			BAIL ASSY
21.	1	01-102-0100	→	→	BRG CONE - UPPER SHAFT CONE
23.	6	01-105-0010	→	→	BRG - PRI. PLANET
24.	3	01-105-0020	→	→	BRG - SEC. PLANET
25.	1	01-102-0090	→	→	BRG CONE - LOWER SHAFT CONE
29.	12	01-150-0020	→	→	HEX CAP SCREW 3/8-16
30.	1	01-103-0090	→	→	BRG CUP - UPPER SHAFT CUP
31.	2	01-150-0110	→	→	HEX CAP SCREW 5/8-11 X 1 1/2
32.	8	01-150-0520	→	→	S.H.C.S 3/8-16
33.	6	01-153-0020	→	→	ROLL PIN, 3/16
34.	12	01-158-0360	→	→	HEX. FLANGE NUT, 3/8-16
36.	1	01-160-0030	→	→	RETAINING RING EXT NO.255
37.	1	01-160-0020	→	→	RETAINING RING EXT NO.237
40.	2	01-166-0040	→	→	LOCKWASHER, 5/8
41.	2	01-207-0010	→	→	PIPE PLUG, 1/2 NPT
43.	1	01-402-0010	→	→	O-RING, NO. 250
44.	2	01-402-0020	→	→	O-RING, NO. 276
46.	1	01-405-0540	→	→	OIL SEAL
47.	2	01-152-0070	→	→	DOWEL PIN

OUTPUT SHAFT					
49.	1	71-004-0513	→	→	2-1/2" HEX. (STEEL)
	1	71-004-1383	→	→	2-5/8" HEX. (STEEL)

50.	1	PER CUSTOMER SPEC			HYDRAULIC MOTOR
-----	---	-------------------	--	--	-----------------



OPTIONS
 SEAL KIT P/N 76-016-2011
 INCLUDES ITEMS 43,44 AND 46

EFFECTIVE DATE:
 08/01/92
 SERIAL NO. 17000

(77BA, 77BC & 77BD (SINGLE SPEED))

E.C.N. 1228
 77BABCBD

REV. A

DATE: 08-26-98