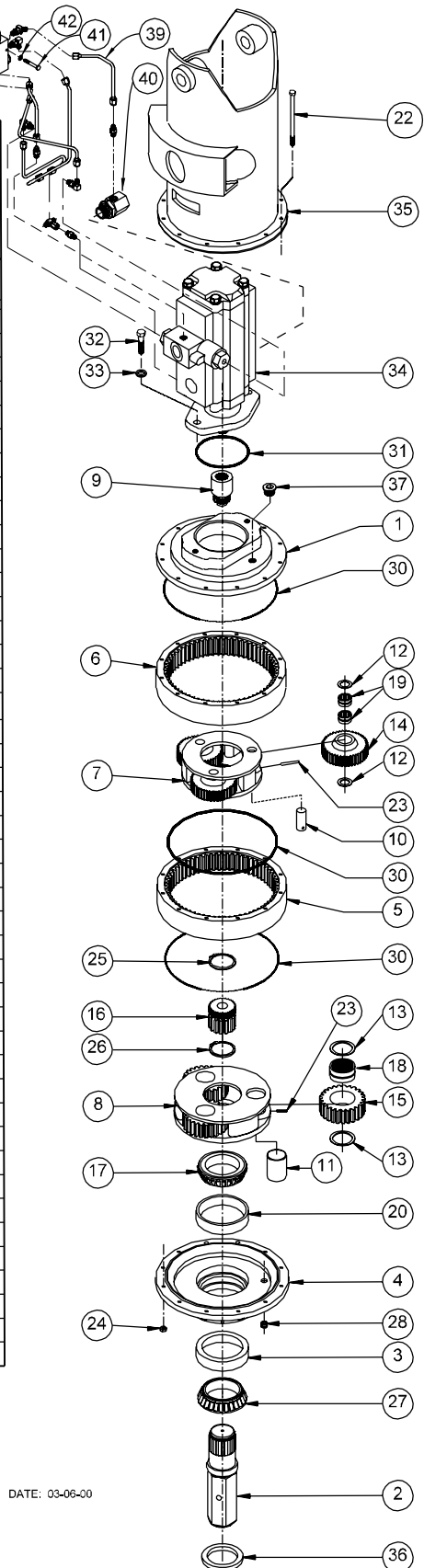




HYDRASYNC MODELS 78-35 & 78-48 WITH KICKDOWN

EFFECTIVE:
FROM: S/N 26633 12-15-99
TO: CURRENT

ITEM	QTY	DESCRIPTION	78-35	78-48
1	1	COVER - 'C' MOUNT	73-004-1154	73-004-1154
2	1	OUTPUT SHAFT 2-1/2" HEX	71-004-0513	71-004-0513
		OUTPUT SHAFT 2-5/8" HEX	71-004-1383	71-004-1383
3	1	BEARING CUP - LOWER	01-103-0080	01-103-0080
4	1	BEARING CARRIER	71-004-2144	71-004-2144
5	1	RING GEAR, SEC.	71-004-0042	71-004-0042
6	1	RING GEAR, PRI.	73-004-1063	73-004-1063
7	1	CARRIER-PRI.	73-004-1043	73-004-1053
8	1	CARRIER-SEC.	71-004-0073	71-004-0073
9	1	INPUT GEAR	73-004-1012	73-004-1002
10	3	PLANET SHAFT-PRI.	71-004-0121	71-004-0121
11	3	PLANET SHAFT-SEC.	71-004-0081	71-004-0081
12	6	WASHER-PRI.	71-004-0861	71-004-0861
13	6	WASHER-SEC.	71-004-0871	71-004-0871
14	3	PLANET GEAR-PRI.	73-004-1032	73-004-1022
15	3	PLANET GEAR-SEC.	71-004-0092	71-004-0092
16	1	SUN GEAR	71-004-0102	71-004-0102
17	1	BEARING CONE - UPPER SHAFT	01-102-0100	01-102-0100
18	3	BEARING - PLANET SEC.	01-105-0020	01-105-0020
19	6	BEARING - PLANET PRI.	01-105-0010	01-105-0010
20	1	BEARING CUP - UPPER	01-103-0090	01-103-0090
22	12	H.H.C.S. 3/8-16 X 6-1/2	01-150-0020	01-150-0020
23	6	ROLL PIN (3/16 X 1)	01-153-0020	01-153-0020
24	12	HEX FLANGE NUT (3/8-16)	01-158-0360	01-158-0360
25	1	RETAINING RING	01-160-0030	01-160-0030
26	1	RETAINING RING	01-160-0020	01-160-0020
27	1	BEARING CONE - LOWER	01-102-0090	01-102-0090
28	1	HOLLOW HEX PLUG (1/2 NPT)	01-207-0010	01-207-0010
30	3	O-RING	01-402-0020	01-402-0020
31	1	O-RING	01-402-0010	01-402-0010
32	2	H.H.C.S. (5/8-11 X 2)	01-150-0050	01-150-0050
33	2	LOCKWASHER (5/8)	01-166-0040	01-166-0040
34	1	MOTOR	PER CUSTOMER SPEC.	
35	1	BAIL ASSY (1-1/4" BAIL BOSS DIA)	73-005-0142K	73-005-0142K
		BAIL ASSY (1-1/2" BAIL BOSS DIA)	73-005-0152K	73-005-0152K
		BAIL AS. (H-SYNC/1.5BB/ROT/K2)	73-005-2092K	73-005-2092K
36	1	SEAL	01-405-0540	01-405-0540
37	1	HOLLOW HEX PLUG 3/4 O-RING	01-208-0030	01-208-0030
38	1	VALVE BODY 2-DIRECTION (K2)	01-308-0150	01-308-0150
39	1	KIT-TUBE AS&FIT'G KICKDOWN-58	01-309-0580	01-309-0580
		KIT-TUBE AS&FIT'G KICKDOWN 61	01-309-0610	
40	1	FITTING, K2 ONLY	01-316-0020	01-316-0020
41	2	H.H.C.S. 1/4-20 X 1-3/4 GR5	01-150-1690	01-150-1690
42	2	FLAT WASHER 1/4"	01-166-0390	01-166-0390



OPTIONS
SEAL KIT P/N 76-016-2011
INCLUDES 3 OF ITEM 30, AND
1 EA. OF ITEMS 31 AND 36