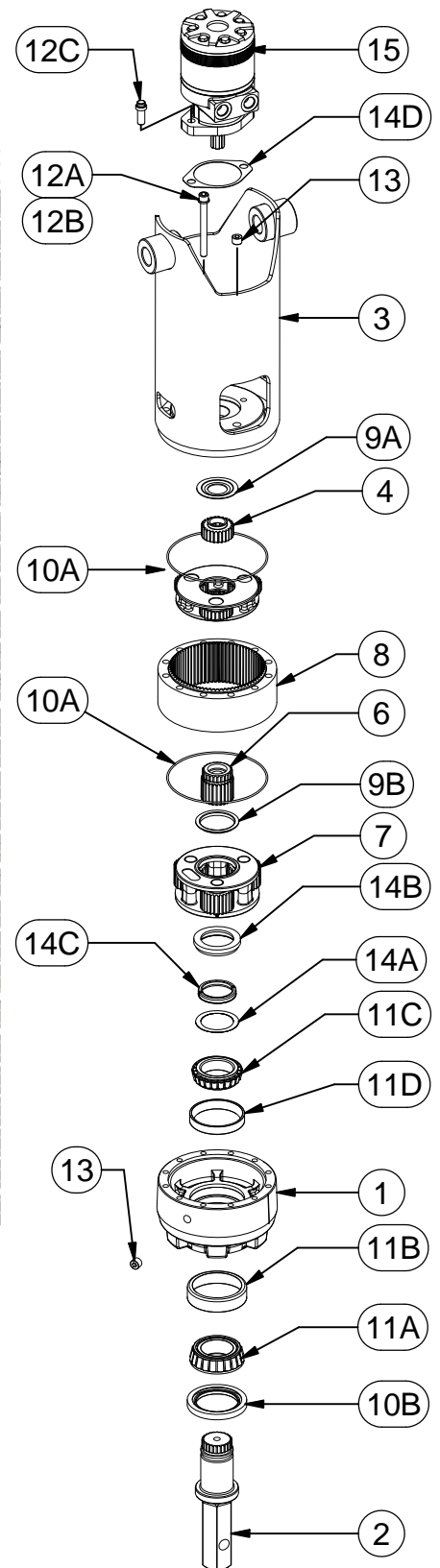




EFFECTIVE
 FROM: S/N 83000 (DATE) 04-26-10
 TO: (CURRENT)

MODEL D50 DIGGER WITH INTEGRAL BAIL

ITEM	QTY	DESCRIPTION	PART NO.
1	1	BASE - INTEGRAL BAIL	50-004-3303
2	1	OUTPUT SHAFT - 2" HEX .516 HOLE	50-004-4082L
3	1	BAIL ASSEMBLY 1-1/4" BAIL BOSSES	50-005-2132
		BAIL ASSEMBLY 1" BAIL BOSSES	50-005-2142
4	1	INPUT GEAR	85-004-1122
5	1	CARRIER ASSEMBLY- PRIMARY	50-005-2011
6	1	SUN GEAR	85-004-1412
7	1	CARRIER ASSEMBLY- SECONDARY	50-005-2041
8	1	RING GEAR	50-004-1023
9	THRUST WASHERS & BEARINGS		
9A	1	THRUST WASHER - INPUT	50-004-1091
9B	1	THRUST WASHER - SEC. CUP	50-004-1011
10	SEALS & O-RINGS		
10A	2	O-RING	01-402-0560
10B	1	OUTPUT SHAFT SEAL	01-405-0530
11	OUTPUT SHAFT BEARINGS		
11A	1	OUTER CONE	01-102-0140
11B	1	OUTER CUP	01-103-0140
11C	1	INNER CONE	01-102-0150
11D	1	INNER CUP	01-103-0130
12	HARDWARE		
12A	12	SHCS (7/16-20 X 4-1/2 GR8)	01-150-1820
12B	12	LOCKWASHER (7/16)	01-166-0340
12C	2	12 PT CBORE CS (1/2-13 X 1.25 GR8)	01-150-1460
13	2	PIPE PLUG (3/8 NPT MAGNETIC)	01-207-0070
14	MISCELLANEOUS		
14A	*	SHIM	50-004-1521
14B	1	LOCK RING	50-004-1462
14C	1	SPLIT RING MODEL 50	50-004-1452
14D	1	GASKET	90-004-1081
15	1	MOTOR	01-304-0540



NOTES:

*BEARING PRELOAD DETERMINES QUANTITY OF SHIMS.
 SEAL KIT (PN 85-016-0601) INCLUDES (2 EA.) ORINGS AND (1 EA.) SEAL

X5016-21F54ab ECN 3393 DATE: 11-15-11 HWP