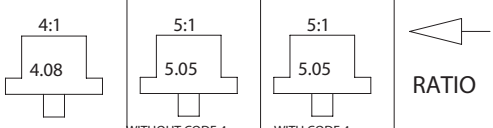


ESKRIDGE MODEL 50L

SINGLE PLANETARY



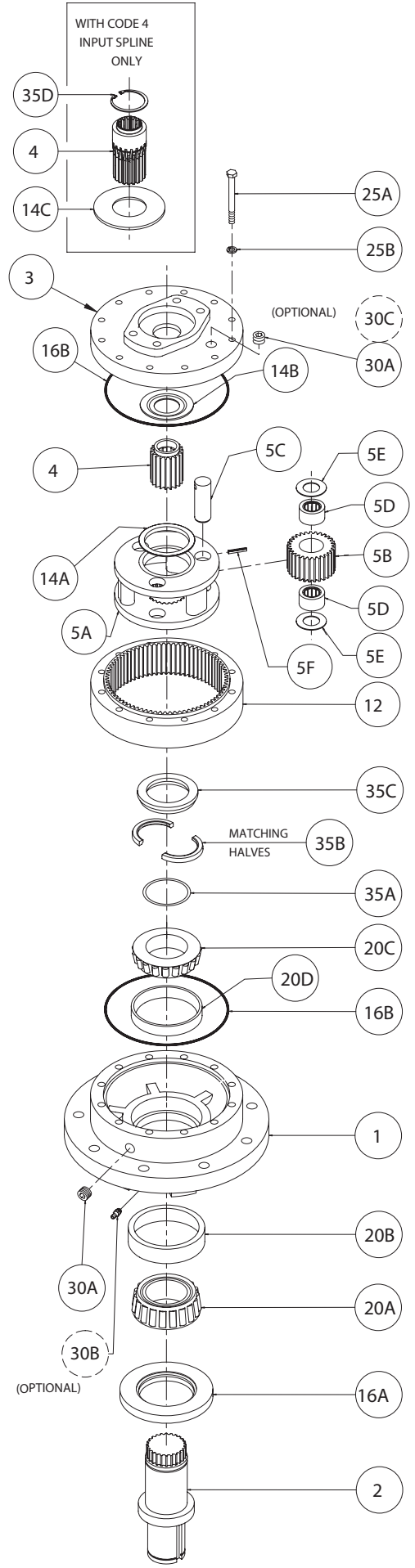
RATIO

EFFECTIVE
FROM: S/N 16130 07-01-93
TO: (CURRENT)

BASES
SHAFTS
COVERS
INPUT GEARS

PART NUMBER	PART NUMBER	PART NUMBER	QTY.	ITEM
50-004-3003			1	1
50-004-3013				
50-004-3193				
50-004-4012L			1	2
50-004-4022L				
50-004-4032L				
50-004-4052L				
50-004-4212L				
50-004-4082L				
50-004-4502L				
50-004-4092L				
50-004-4312L				
50-004-4292L				
50-004-1173			1	3
50-004-1183				
50-004-1233				
50-004-1333				
85-004-1382	85-004-1392		1	4
85-004-1272	85-004-1262			
85-004-1292		50-004-1112		
85-004-1562	85-004-1572			
85-004-1592				
50-005-2041	50-005-2031		1	5
50-004-1062	50-004-1052		1	5A
85-004-1051	85-004-1041		3	5B
71-004-0121	71-004-0121		3	5C
01-105-0010	01-105-0010		6	5D
85-004-1181	85-004-1181		6	5E
01-153-0210	01-153-0210		3	5F
-	-		-	6
50-004-1033	50-004-1023		1	12
50-004-1011	50-004-1011		1	14A
50-004-1091	50-004-1091		1	14B
	81-004-2883		1	14C
85-016-0601			-	16
01-405-0530			1	16A
01-402-0560			2	16B
01-102-0140			1	20A
01-103-0130			1	20B
01-102-0150			1	20C
01-103-0140			1	20D
01-150-1540	01-150-1550		12	25A
01-166-0340			12	25B
01-207-0070			2	30A
01-215-0010			(1)	30B
01-216-0070			(1)	30C
01-207-0030			(1)	30D
50-004-1521			*	35A
50-004-1452			1	35B
50-004-1462			1	35C
	01-160-0350		1	35D

C O D E	DESCRIPTION
A	ROUND FLANGE (NO ZERK)
E	RECTANGULAR FLANGE (NO ZERK)
F	FLANGLESS (NO ZERK)
C	CUSTOM
D1	2"DIA SHAFT-3/8" KEYWAY
D2	23T 12/24 D.P. SPLINE
D3	2-1/8"DIA SHAFT-1/2" KEYWAY
D4	2"DIA SHAFT-1/2" KEYWAY
F2	2"DIA X .50" KEY (INTERNAL)
H2	2"HEX SHAFT-13/16 DIA.HOLE
H3	2-5/8"HEX SHAFT-13/16 DIA.HOLE
R2	2"DIA AUGER-.562"HOLE
S1	7" SPINDLE 50L (5) X 1/2-13
S2	7" SPINDLE 50L (5) X .610 DIA THRU HOLES
C1	SHAFT-CUSTOM
A	COVER-SAE 'A'
B	COVER-SAE 'B' 2-BOLT
C	COVER-SAE 'C' 4-BOLT
K	COVER-SAE 'C' 2-BOLT
2	INPUT GEAR 13T 16/32 DP SPLINE
3	INPUT GEAR SAE 1"-6B SPLINE
4	INPUT GEAR 14T 12/24 DP SPLINE
5	INPUT GEAR 15T 16/32 DP SPLINE
6	INPUT GEAR 1" DIA X .25 KEY
	CARRIER ASSEMBLY
	CARRIER
	PLANET GEAR
	PLANET SHAFT
	PLANET BEARING
	PLANET THRUST WASHER
	ROLL PIN 3/16 X 7/8
	SUN GEAR
	RING GEAR
	CARRIER THRUST WASHER
	INPUT THRUST WASHER
	THRUST WASHER
	SEAL KIT (1 SEAL, 2 O-RINGS)
	SEAL-SHAFT
	O-RING
	BEARING CONE (OUTER)
	BEARING CUP (OUTER)
	BEARING CONE (INNER)
	BEARING CUP (INNER)
	HEX CAPSCREW 7/16-20 GR8
	LOCKWASHER 7/16 MED
	PIPE PLUG-MAGNETIC 3/8 NPT-SOC HD
	GREASE FITTING (OPTIONAL) STR. 1/8 NPT
	AIR VENT 3/8 NPT (OPTIONAL)
	PIPE PLUG (C & K COVER ONLY) 1/8 NPT
	SHIM(S)
	SPLIT RING (MATCHING HALVES)
	LOCK RING
	RETAINING RING



FOR GREASE ZERK OPTION, ADD 'Z' SUFFIX TO BASE P/N

NOTES:
*BEARING PRELOAD DETERMINES QUANTITY OF SHIMS.
S2 - SHAFT REQUIRES STUDS (QTY 5) PART NO. 01-164-0040.

E.C.N. # 2791
X50LD1-AF 01/15/08